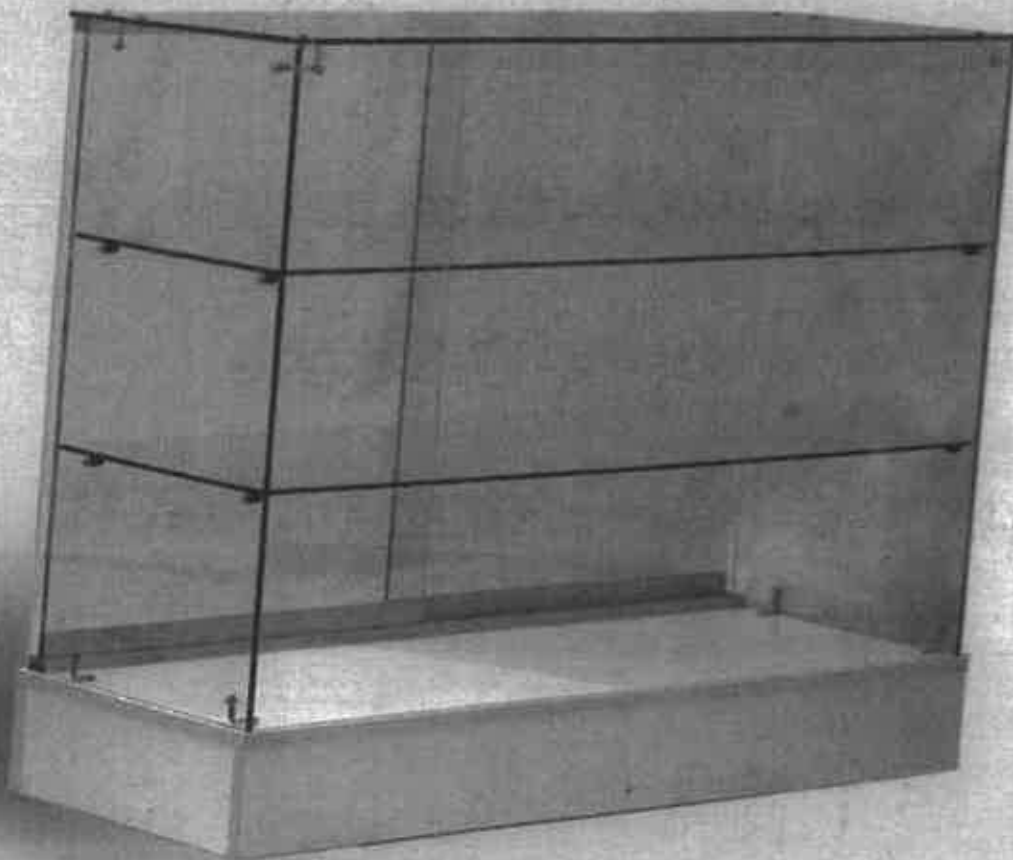


**FULL VISION SHOWCASE (SAG4)
ASSEMBLY INSTRUCTION**



NOTE: Must have two persons assemble this unit.

PARTS LIST



DOOR PULL (X2)



#6 x 1/2" PAN SCREW (X6)



TROX SCREW x 3/4" (X22)



TROX SCREW x 1/2" (X2)



AGCON2 (X6)



AGCON3 (X2)



BOLT (X16)



#58 CAM LOCK (X16)



ELF SUPPORT (X8)



PLASTIC GLAZING (X22)



BLACK WASHER (X38)



GLIDE (X4)



TOP GUIDE (X4)



GLASS GLAZING (X4)



GRAY SCREW-CAP (X2)



HW17-4 (X1)



HW116-4 (X1)



HW18-4 (X1)



NE09034-4 (X2)



TOEKICK (X2)



SIDE GLASS (X2)



FRONT GLASS (X1)



SHELF GLASS (X2)



GLASS DOOR (X2)



TOP GLASS (X1)



SIDE TOEKICK (X2)



BOTTOM PANEL (X1)

TOOLS NEEDED



*T20 TROX SCREW DRIVER NEEDED

ALL GLASS FULL VISION CASE

TOTAL 4 BOXES

CONTENTS

1 BOX - 2 DOORS + GLASS BACK (3-PCS)

1 BOX – 2 SHELVES + 1 TOP + 2 SIDES (5-PCS)

1 BOX - BASE + HARDWARE

1 BOX – EXTRUSIONS + HARDWARE

1. BASE ASSEMBLE

TOEKICK (x2) #58 CAM LOCK (x16)
SIDE TOEKICK (x2) BOLT (x16)
BOTTOM PANEL (x1) GLIDE (x4)

1. CONNECT SIDE TOE KICK PANEL WITH TOE KICK PANEL USING BOLT.
2. INSERT AND TIGHTEN #58 CAM LOCK.
3. ATTACH GLIDES ON TOE KICK.
4. CONNECT TOE KICK SET WITH BOTTOM PANEL USING BOLT.
5. INSERT AND TIGHTEN #58 CAM LOCK.
6. SIT BASE ON FLOOR.



2. GLASS MODULAR ASSEMBLE

FRONT GLASS (x1) AGCON3 (x2)
SIDE GLASS (x2) #6 x 1/2" PAN SCREW (x4)
TOP GLASS (x1) TROX SCREW x 3/4" (x22)
AGCON2 (x6) SHELF SUPPORT (x8)

1. INSERT FRONT GLASS.
2. INSERT RIGHT SIDE GLASS.
3. CONNECT FRONT GLASS WITH RIGHT SIDE GLASS USING AGCON3 & 3/4" L TROX SCREW.
4. CONNECT RIGHT SIDE GLASS WITH BOTTOM USING AGCON2, 3/4" L TROX SCREW & #6 x 1/2" PAN SCREW.
5. REPEAT SETP 3 AND 4, TO CONNECT LEFT SIDE GLASS WITH FRONT GLASS AND BOTTOM.
6. CONNECT TOP GLASS WITH MODULAR USING 3/4" TROX SCREW.
7. CONNECT TROX SCREW 3/4" THROUGH SIDE GLASS WITH SHELF SUPPORT.



GLASS DOOR ASSEMBLE

- GLASS DOOR (x2)
- HW117 (x2)
- HW116 (x2)
- HW18-4 (x2)
- NE09034 (x2)
- #6 x 1/2" PAN SCREW (x2)
- TROX SCREW x 1/2" (x2)
- GLASS GLAZING (x4)
- TOP GUIDE (x2)
- DOOR PULL (x2)

1. CONNECT HW117-4 WITH TOP GLASS USING TROX SCREW x 1/2"
2. CONNECT HW116-4 WITH BOTTOM USING #6 x 1/2" PAN SCREW
3. SNAP HW18-4 INTO HW116-4.
4. ATTACH 2 GLASS GLAZING ON 24"L EDGE OF GLASS DOOR.
5. ATTACH NE09034-4 WITH GLASS DOOR.
6. ATTACH 2 TOP GUIDE ON TOP OF GLASS DOOR.
7. PLACE GLASS SHELF ON TO SHELF SUPPORT.
8. INSERT GLASS DOOR ON CASE.
9. ADHERE DOOR PUEL ON GLASS DOOR WITH PROPER POSITION.

