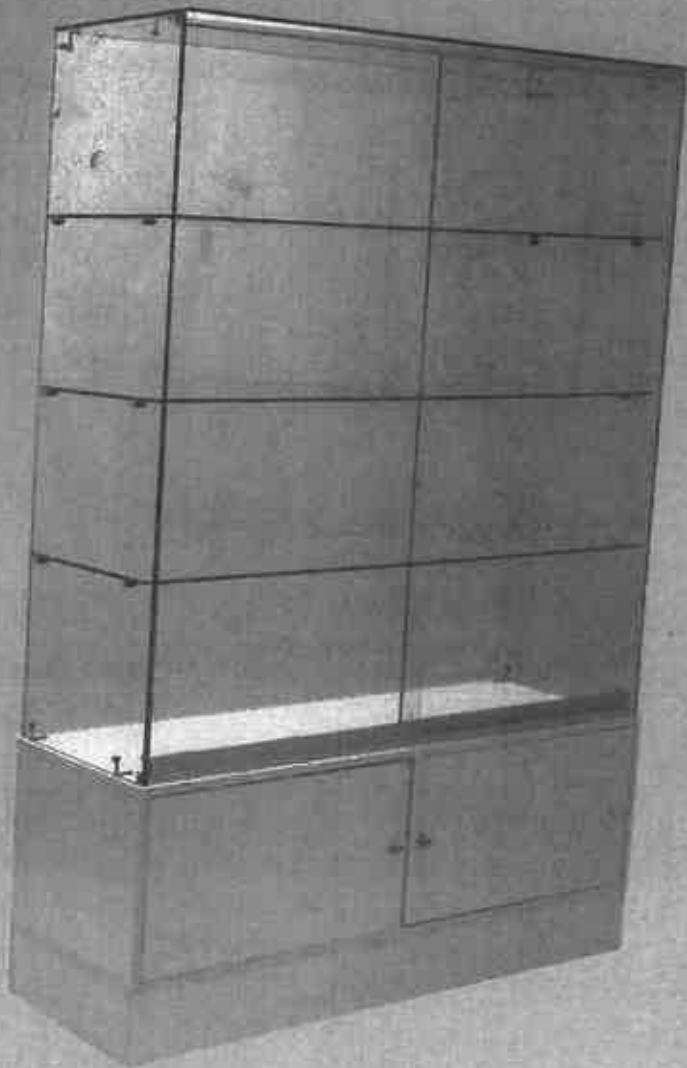


HALF VISION WALLCASE(SAGWH4)
ASSEMBLY INSTRUCTION



NOTE: *Must have two persons assemble this unit.*

PARTS LIST



DOOR PULL (X2)



#6 x 1/2" PAN SCREW (X18)



TROX SCREW x 3/4" (X28)



TROX SCREW x 1/2" (X2)



AGCON3 (X2)



AGCON2 (X8)



BOLT (X36)



#58 CAM LOCK (X36)



SELF SUPPORT (X12)



PLASTIC GLAZING (X16)



GLASS GLAZING (X4)



SLIDE (X4)



TOP GUIDE (X4)



RAY SCREW-CAP (X2)



HW117-4 (X1)



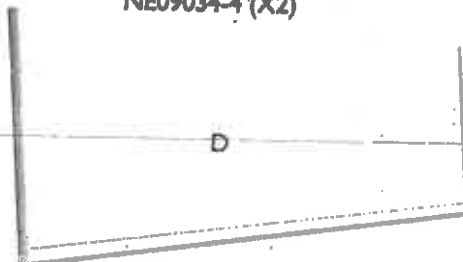
HW116-4 (X1)



HW18-4 (X1)



NE09034-4 (X2)



FALSE BOTTOM PANEL (X1)



FRONT PANEL (X1)



SIDE PANEL (X2)



CENTER PANEL (X1)



STORAGE DOOR (X2)



SIDE GLASS (X2)



BACK GLASS (X1)



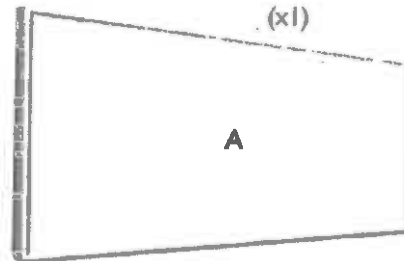
SHELF GLASS (X3)



GLASS DOOR (X2)



TOP GLASS (X1)



BOTTOM PANEL (X1)



TOEKICK (X2)



SIDE TOEKICK (X2)

TOOLS NEEDED



*T20 TROX SCREW DRIVER NEEDED

ALL GLASS HALF VISION WALL CASE

TOTAL 5 BOXES

CONTENTS

1 BOX - 2 DOORS AND 2 SIDES (4-PCS)

1 BOX – 3 SHELVES AND 1 TOP (4-PCS)

1 BOX - 1 GLASS BACK

1 BOX - BASE + HARDWARE

1 BOX – EXTRUSIONS + HARDWARE

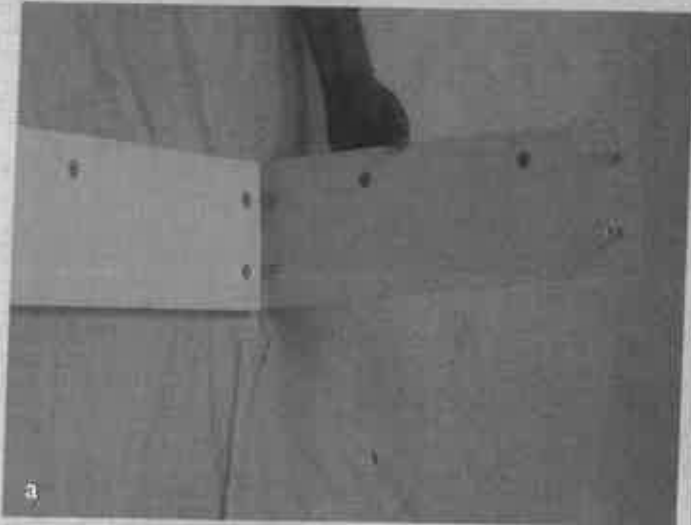
I.

BASE ASSEMBLE

TOEKICK (x2)
SIDE TOEKICK (x2)
FALSE BOTTOM (x1)

#58 CAM LOCK (x16)
BOLT (x16)
GLIDE (x4)

1. CONNECT SIDE TOE KICK PANEL WITH TOE KICK PANEL USING BOLT.
2. INSERT AND TIGHTEN #58 CAM LOCK.
3. ATTACH GLIDES ON TOE KICK.
4. CONNECT TOE KICK SET WITH FALSE BOTTOM PANEL USING BOLT.
5. INSERT AND TIGHTEN #58 CAM LOCK.
6. SIT BASE ON FLOOR.



2.

STORAGE ASSEMBLE

- FRONT PANEL (x1)
- SIDE PANEL (x2)
- CENTER PANEL (x1)
- BOTTOM PANEL (x1)
- DOOR PANEL (x2)
- HINGE (x4)
- BOLT (x20)
- DOOR KNOB (x2)
- #6 x 1/2" PAN SCREW(x24)

1. CONNECT SIDE PANEL WITH FRONT PANEL USING BOLT.
2. INSERT AND TIGHTEN #58 CAM LOCK.
3. CONNECT FRONT PANEL WITH FALSE BOTTOM PANEL USING BOLT.
4. INSERT AND TIGHTEN #58 CAM LOCK.
5. CONNECT CENTER PANEL WITH FALSE BOTTOM USING BOLT.
6. INSERT AND TIGHTEN #58 CAM LOCK.
7. CONNECT BOTTOM PANEL WITH STORAGE MODULAR.
8. INSERT AND TIGHTEN #58 CAM LOCK.
9. ATTACH HINGE TO DOOR PANEL USING #6 x 1/2" PAN SCREW.
10. ATTACH DOOR KNOBS TO DOOR PANEL.
11. CONNECT DOOR WITH LEFT SIDE PANEL USING #6 x 1/2" PAN SCREW.

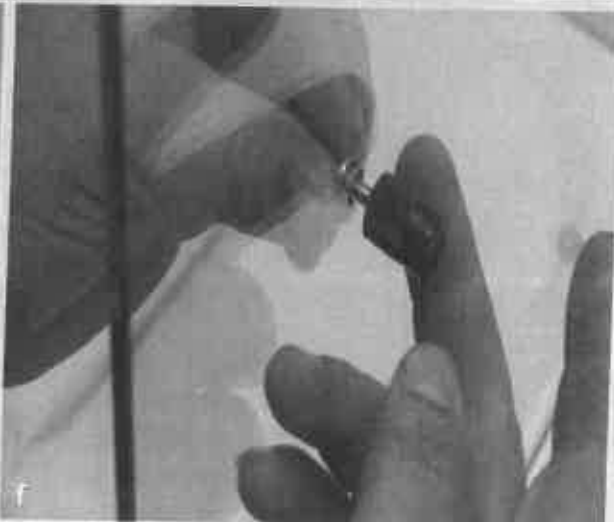
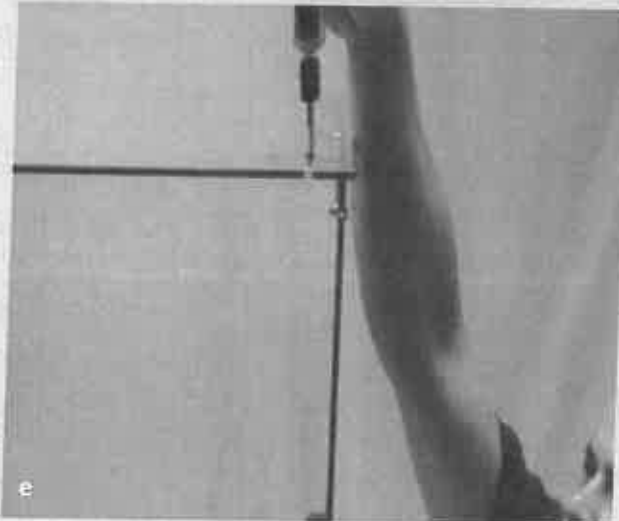


3.

GLASS MODULAR ASSEMBLE

BACK GLASS (x1)
LEFT SIDE GLASS (x1)
RIGHT SIDE GLASS (x1)
TOP GLASS (x1)
AGCON2 (x8)
AGCON3 (x2)
#6 x 1/2" PAN SCREW (x4)
TROX SCREW x 3/4" (x28)
SHELF SUPPORT (x12)

1. INSERT BACK GLASS.
2. INSERT LEFT SIDE GLASS.
3. CONNECT BACK GLASS WITH LEFT SIDE GLASS USING AGCON3 & 3/4" L TROX SCREW.
4. CONNECT LEFT SIDE GLASS WITH BOTTOM USING AGCON2, 3/4" L TROX SCREW & #6 X 1/2 PAN SCREW.
5. REPEAT SETP 3 AND 4. TO CONNECT RIGHT SIDE GLASS WITH FRONT GLASS.
6. CONNECT TOP GLASS WITH MODULAR USING 3/4" TROX SCREW.
7. CONNECT TROX SCREW 3/4" THROUGH SIDE GLASS WITH SHELF SUPPORT.



4.

GLASS DOOR ASSEMBLE

GLASS DOOR (x2) TROX SCREW x 1/2" (x2)
HW117-4 (x1) GLASS GLAZING (x4)
HW116-4 (x1) TOP GUIDE (x4)
HW18-4 (x1) DOOR PULb (x2)
NE09034-4 (X2)
#6 x 1/2" PAN SCREW (x2)

1. CONNECT HW117-4 WITH TOP GLASS USING TROX SCREW x 1/2".
2. CONNECT HW116-4 WITH BOTTOM USING #6 x 1/2" PAN SCREW
3. SNAP HW18-4 INTO HW116-4.
4. ATTACH 2 GLASS GLAZING ON 24"L EDGE OF GLASS DOOR.
5. ATTACH NE09034-4 WITH GLASS DOOR.
6. ATTACH 2 TOP GUIDE ON TOP OF GLASS DOOR.
7. PLACE GLASS SHELF ON TO SHELF SUPPORT.
8. INSERT GLASS DOOR ON CASE.
9. ADHERE DOOR PUL. ON GLASS DOOR WITH PROPER POSITION.

